

23rd ANNUAL IRWA RIGHT OF WAY Competition

Enter your map today!

Sponsored by IRWA's International Surveying & Engineering Committee, this annual competition will be held in conjunction with IRWA's 71st Annual International Education Conference in June of 2025 in Virginia Beach, Virginia.

Winners will be announced in Right of Way Magazine and at the Annual Education Conference, where winning maps will also be displayed. Winners will receive recognition at a national, Regional or local IRWA meeting.

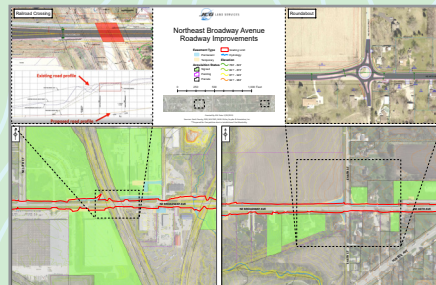
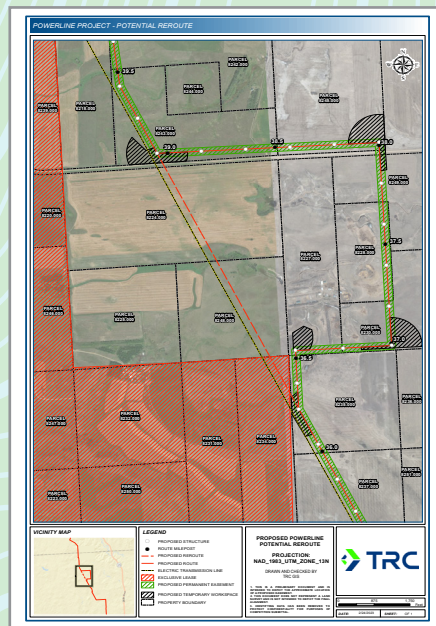
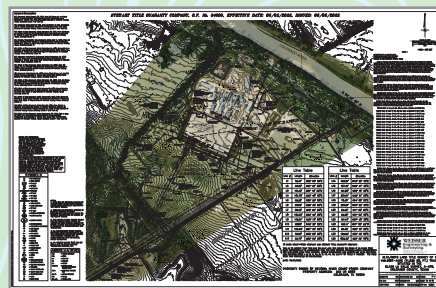
Eligibility: Anyone can enter, however, each entry must be sponsored by an IRWA member. Members may sponsor multiple entries. Maps must be associated with the right of way profession including related disciplines.

Prizes: The Grand prize winner will receive a complimentary registration for IRWA's 71st Annual International Education Conference. In addition, a cash prize of \$250 will be given to the individual winners in the following categories: Transportation, Oil & Gas, Electric & Utility, GIS, SUE Mapping, Engineering and Industry General.

Rules: One entry per person in each category. A map may only be entered in one category. Each entry shall be a standalone single sheet. Maps and entry forms must be submitted digitally using Adobe pdf files. Entries under the transportation, oil & gas and electric & utility categories must be maps/plats prepared for, or in support of, boundary/right of way line retracement or acquisition. This includes, but is not limited to, property or right of way survey maps and plats. Entries under the GIS and industry general categories shall be maps or exhibits related to highways, pipelines, utility lines, telecommunication lines (or associated facilities) prepared for general purposes such as public hearings, presentations, conceptual plans, etc. Examples include, but are not limited to, ownership exhibits and aerial photos (with or without overlays), etc.

Judging: Entries will be judged on overall presentation, orientation and the effective use of graphics, legends, symbols and innovative methods

Disclaimer Information: If contractual confidentiality precludes submission, the title block can be cleared of all pertinent information and state "Prepared for Competition due to Jurisdictional Confidentiality."



23rd Annual Right of Way Mapping Competition

Official Entry Form (please print or type)

Deadline: February 26, 2025

IRWA Sponsor _____

Entrant's Name _____

Company Name or Agency _____

Address _____ City _____ State/Province _____ Zip/Postal _____

Phone _____ Email _____

Category

☐ Transportation

☐ Oil & Gas

☐ Electric & Utility

☐ GIS

☐ Industry General

☐ SUE Mapping

☐ Engineering

Email PDF entries to:
Tony.Pollack@hdrinc.com