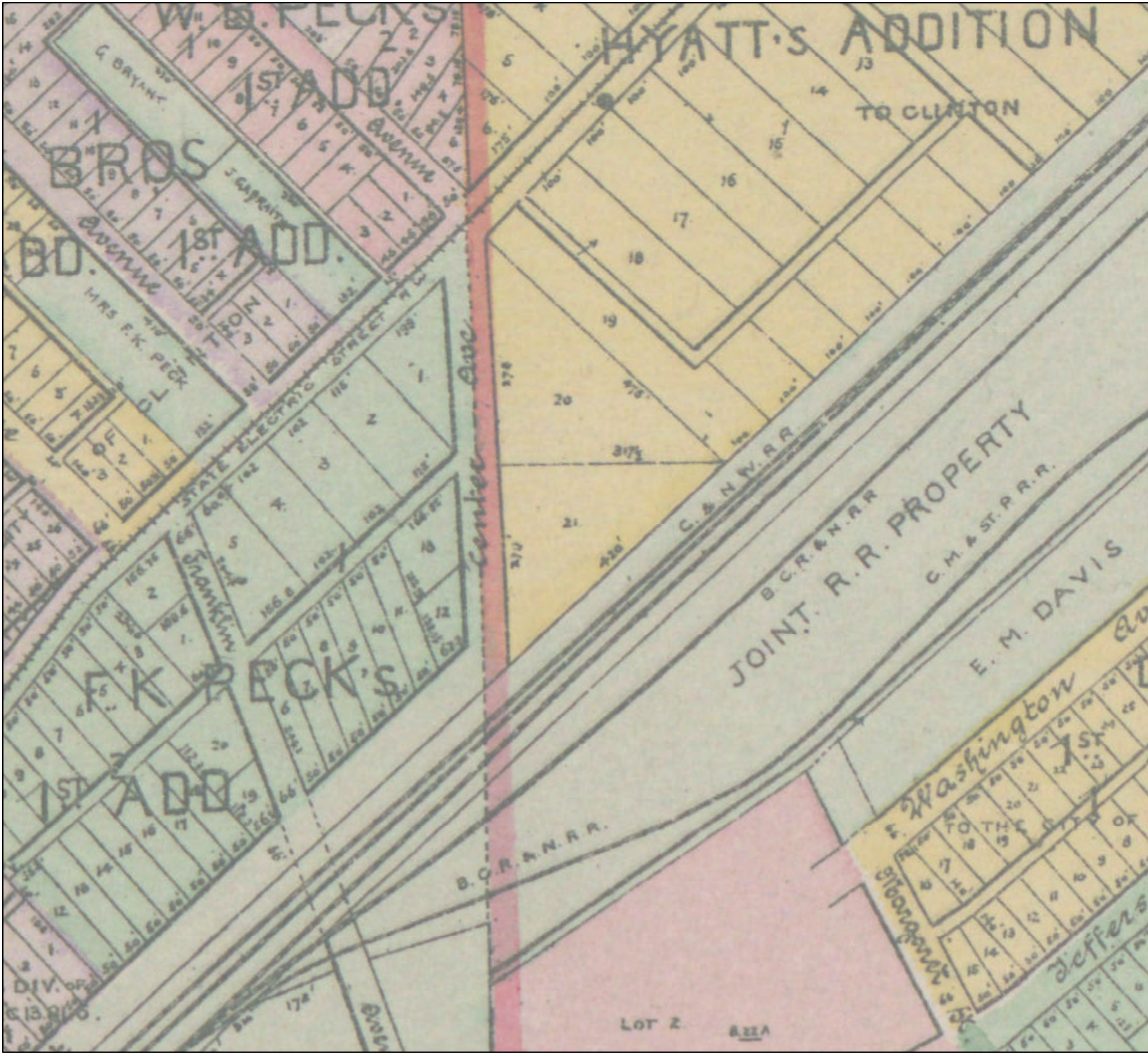


# Railroad Acquisition Process

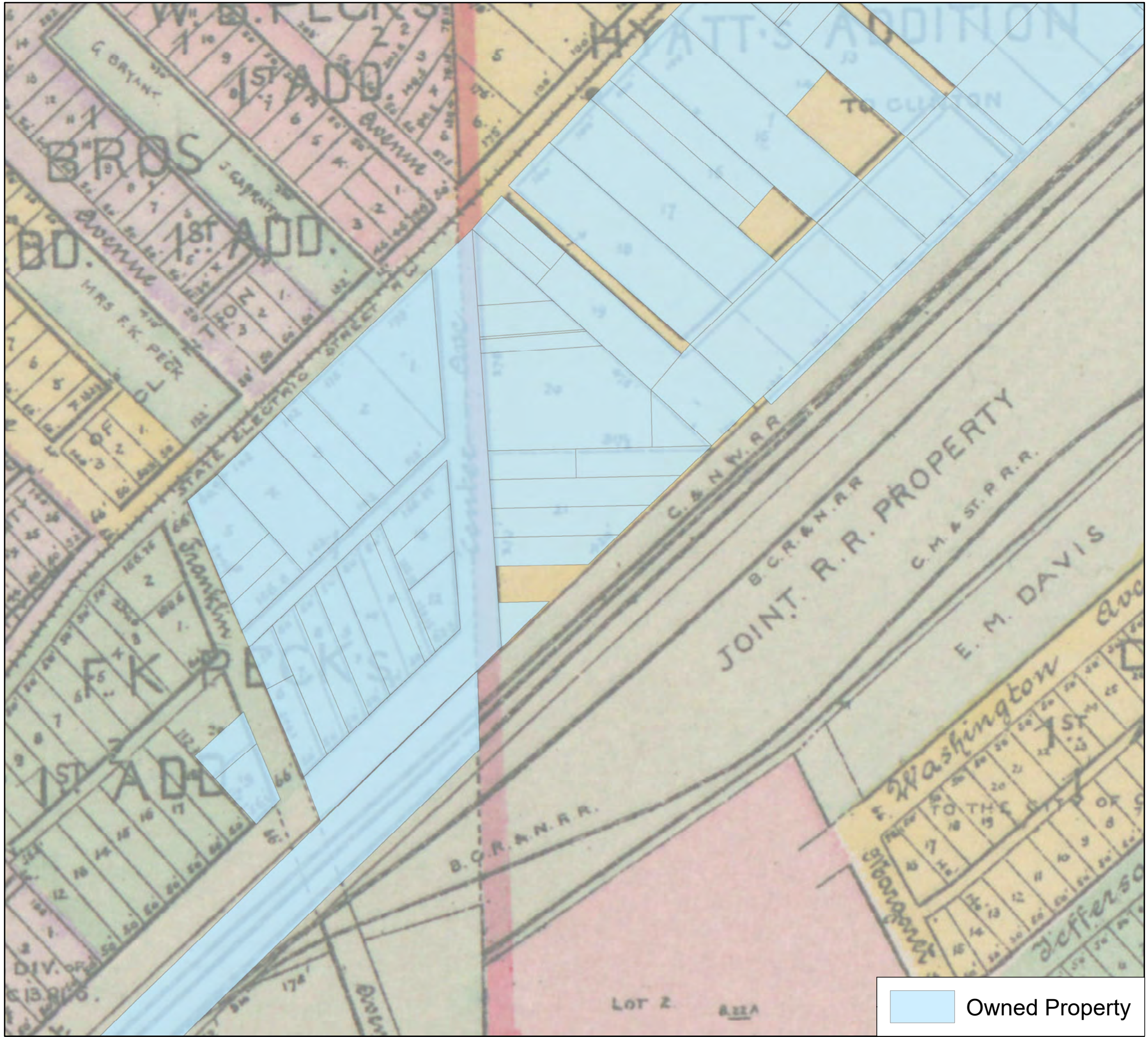
\*\*Prepared for Competition due to Jurisdictional Confidentiality



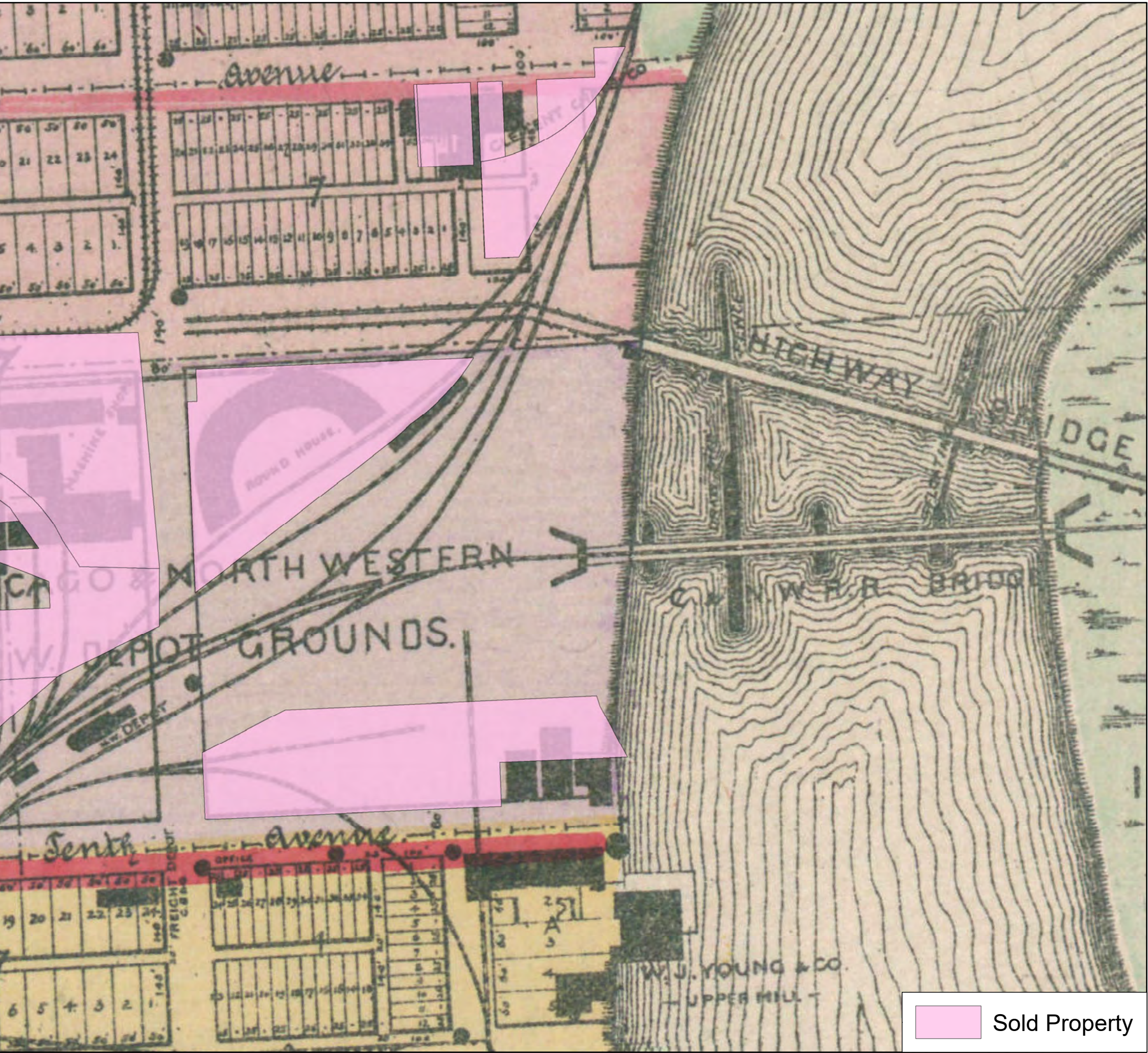
1894 Plat Map



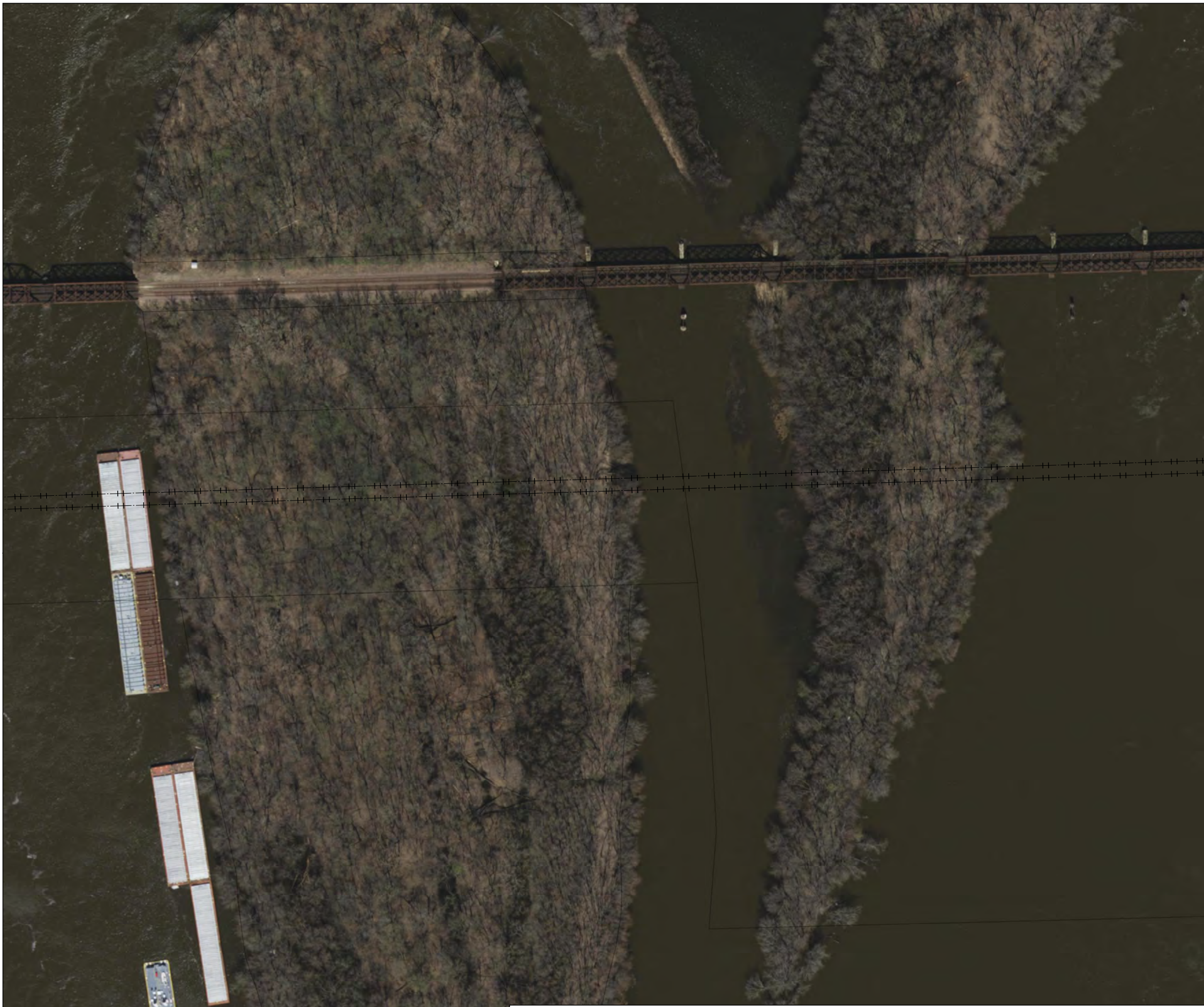
Digitize Deeds (1856 - 2014)



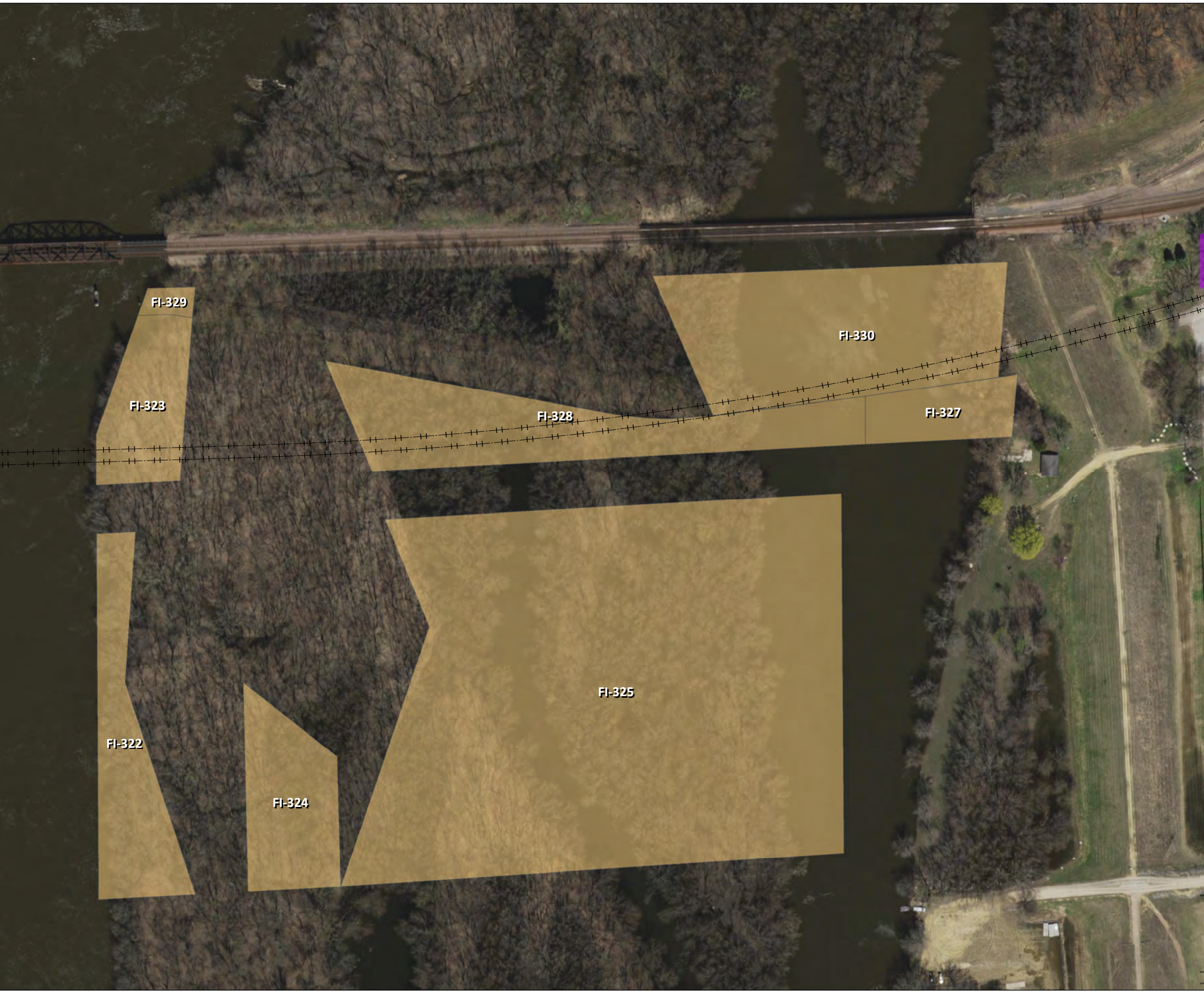
Digitize Land Sales (1883 - 2008)



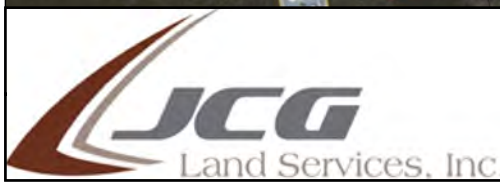
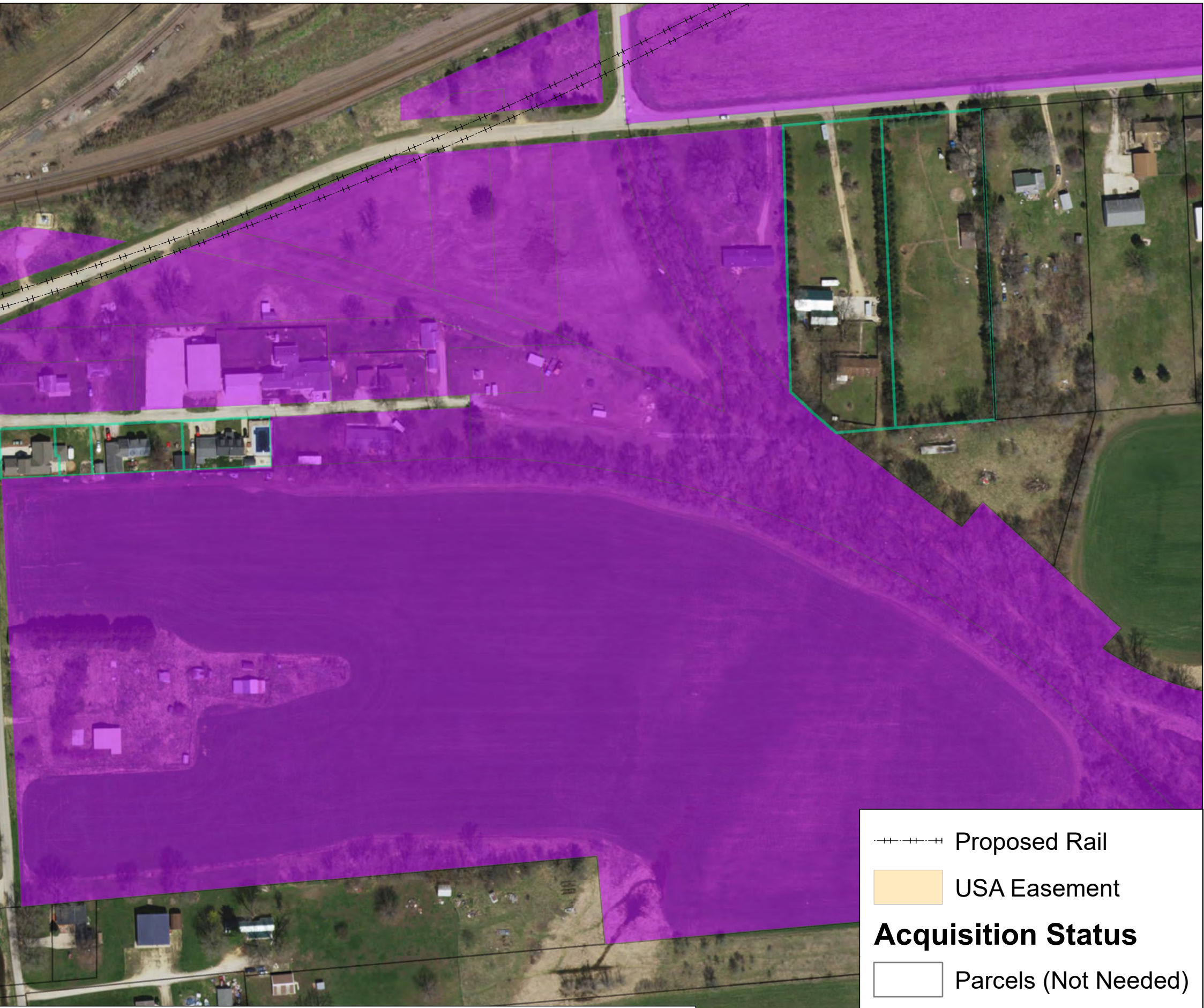
River Island Research



USA Easement/Fish & Wildlife Research



Current Client Acquisition Status



This map series is derived from a complex railroad acquisition project. The study corridor spreads across two cities, two states and under jurisdiction of three federal agencies. Our research included land ownership and acquisition, determinations of ownership of river islands and mapping historical deeds as far back as 1856 to verify ownership in the client corridor.

Sources: City of Clinton, IA, Whiteside County, IL  
Created By: BN Date: 4/2/2019